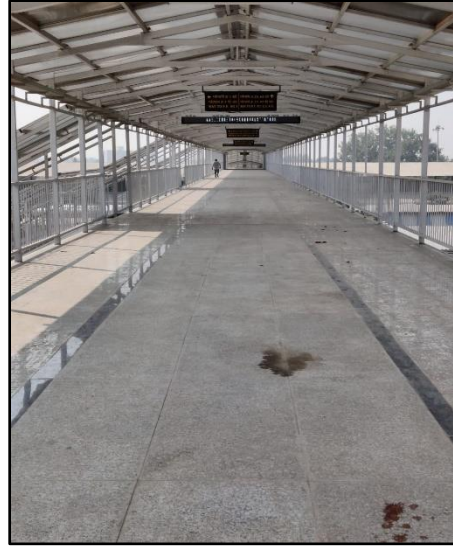
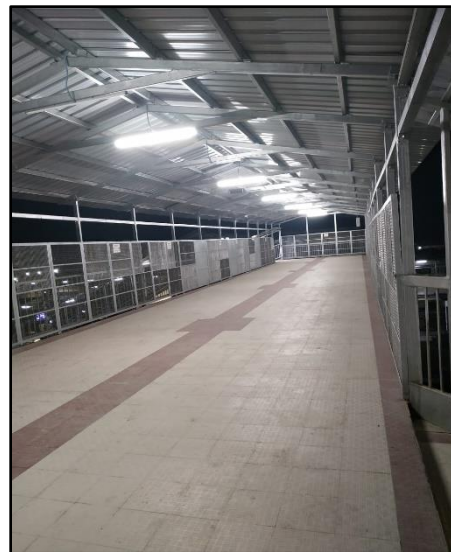


Passenger Amenities :- (Completed works)

1. SUR-Provision of 6m wide FOB at Solapur at PA end.



2. DD-Extension of FOB 6 m wide at DD station.



3. Prefabricated Divyang toilets provided at 8 stations i.e. SGND, BWD, VPR, SRL, VL, PDGN, CIT, KNGN, YL.

