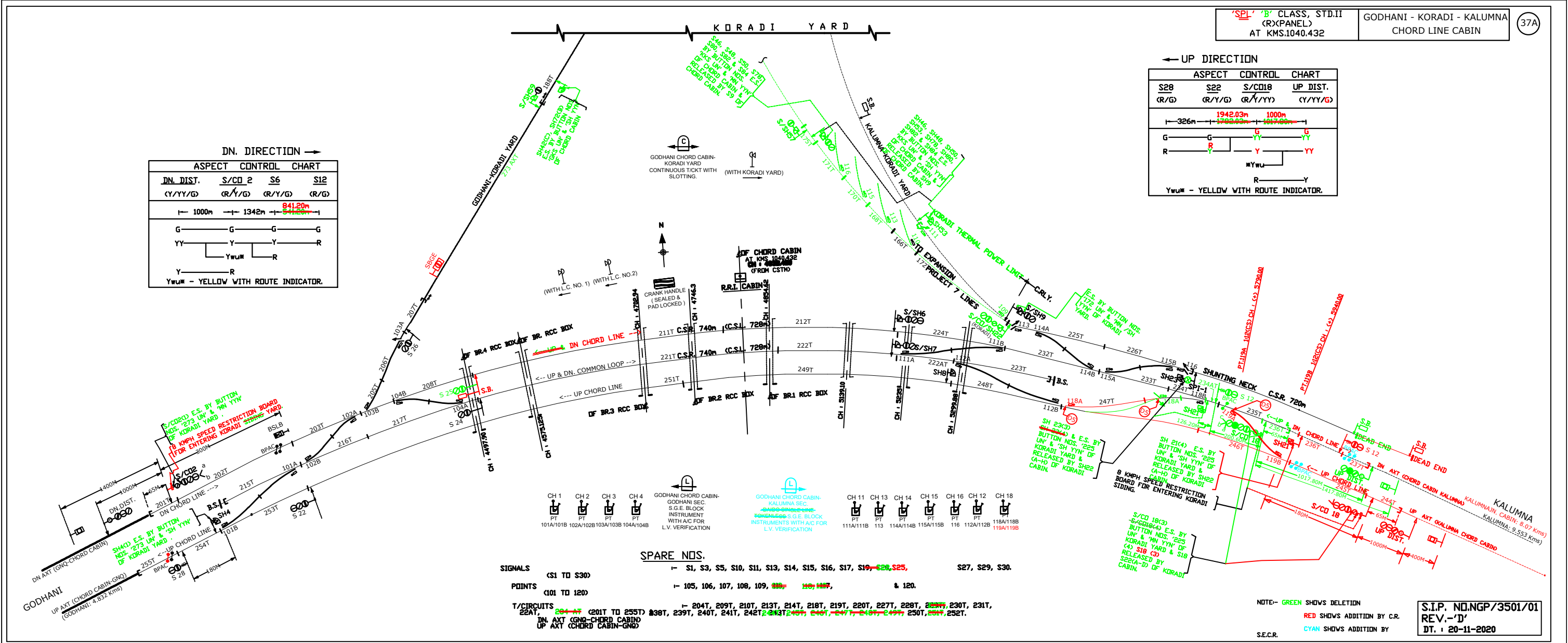


DN. DIRECTION →

| ASPECT CONTROL CHART | | | |
|-------------------------------------|---------|---------|---------|
| DN. DIST. | S/CD 2 | S6 | S12 |
| (Y/Y/G) | (R/Y/G) | (R/Y/G) | (R/G) |
| 1000m | 1342m | 841.20m | 512.00m |
| G | G | G | G |
| YY | Y | Y | R |
| Y | Ywum | R | Y |
| Y | R | | |
| Ywum - YELLOW WITH ROUTE INDICATOR. | | | |

← UP DIRECTION

| ASPECT CONTROL CHART | | | |
|-------------------------------------|----------|----------|----------|
| S28 | S22 | S/CD18 | UP DIST. |
| (R/G) | (R/Y/G) | (R/Y/YY) | (Y/Y/G) |
| 326m | 1942.03m | 1000m | 1017.00m |
| G | G | G | G |
| R | R | Y | YY |
| | | Ywum | Y |
| | | R | Y |
| Ywum - YELLOW WITH ROUTE INDICATOR. | | | |



- SIGNALS**
 CS1 TO S30
- POINTS**
 101 TO 120
- T/CIRCUITS**
 201 TO 255
- SPARE NOS.**
 S1, S3, S5, S10, S11, S13, S14, S15, S16, S17, S19, S28, S25, S27, S29, S30.
- 105, 106, 107, 108, 109, 110, 117, 118, 119, 120.
- 204T, 209T, 210T, 213T, 214T, 218T, 219T, 220T, 227T, 228T, 230T, 231T, 238T, 239T, 240T, 241T, 242T, 243T, 245T, 246T, 247T, 248T, 249T, 250T, 251T, 252T.

NOTE- GREEN SHOWS DELETION
 RED SHOWS ADDITION BY C.R.
 CYAN SHOWS ADDITION BY S.E.C.R.

S.I.P. NO.NGP/3501/01
 REV.-'D'
 DT. : 20-11-2020