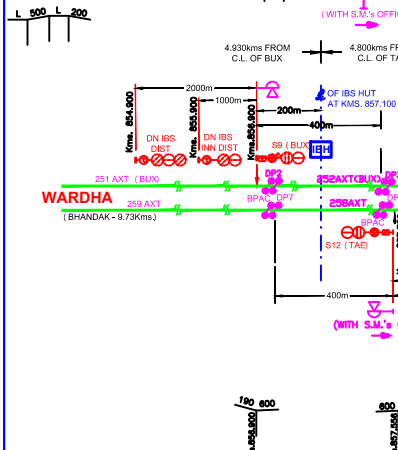


"B" CLASS STD III(R)
(PANEL) AT Km 861.900



1 G.F. (10) CONTROLLED BY BUTTON NOS. 'G.F. (10) YN' & 'YNN'. 'K.L.' FITTED ON SDG. POINT NO. 2 G.F. (10). KEY FOR UNLOCKING 'K.L.' IS EXTRACTED FROM LEVER NO. 1 G.F. (10) IN NORMAL POSITION. KEY CAN BE EXTRACTED FROM KEY LOCK, ONLY WHEN POINTS ARE SET & LOCKED IN EITHER POSITION.

SPARES:
SIGNAL (S1 TO S26) - S1, S9, S22, S23.
POINTS (101 TO 129) - 106, 109, 115, 116.
TRACK CIRCUITS (201 TO 269) - 205T, 206T, 210T, 214T, 224T, 225T, 251T TO 266T, 267T.

SPARE NOS.
POINTS (S31 TO S49) - S32, S36, S37, S38, S39, S43, S44.
POINTS (131 TO 149) - 135, 136, 138, 139, 140.
TRACK CIRCUITS - 308T, 309T, 312T, 318T, 301T TO 320T.